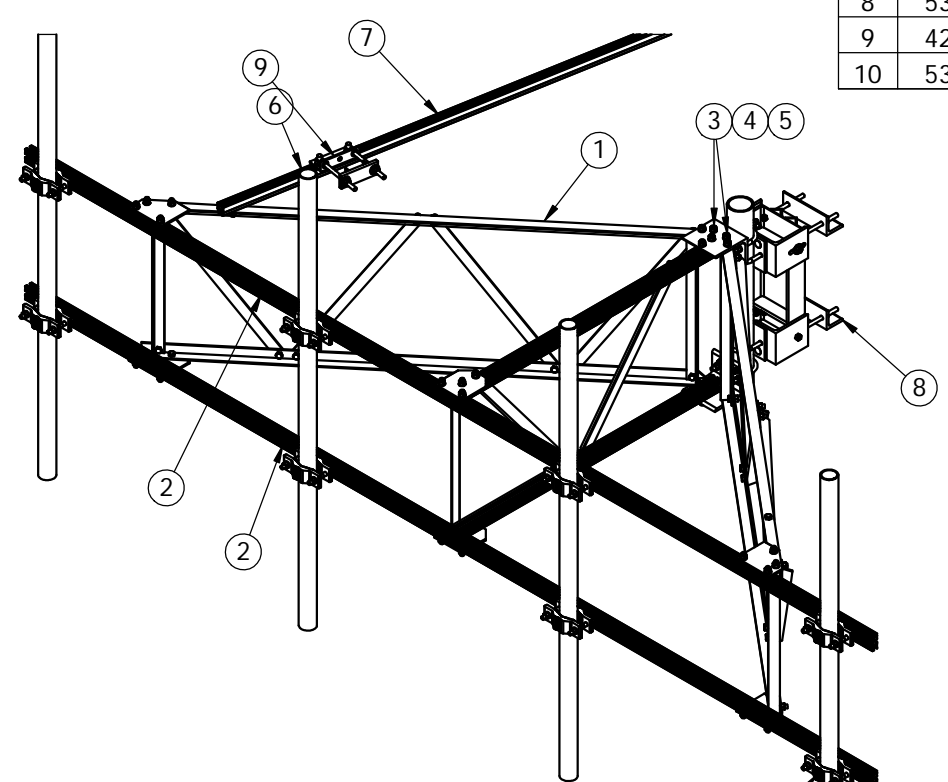
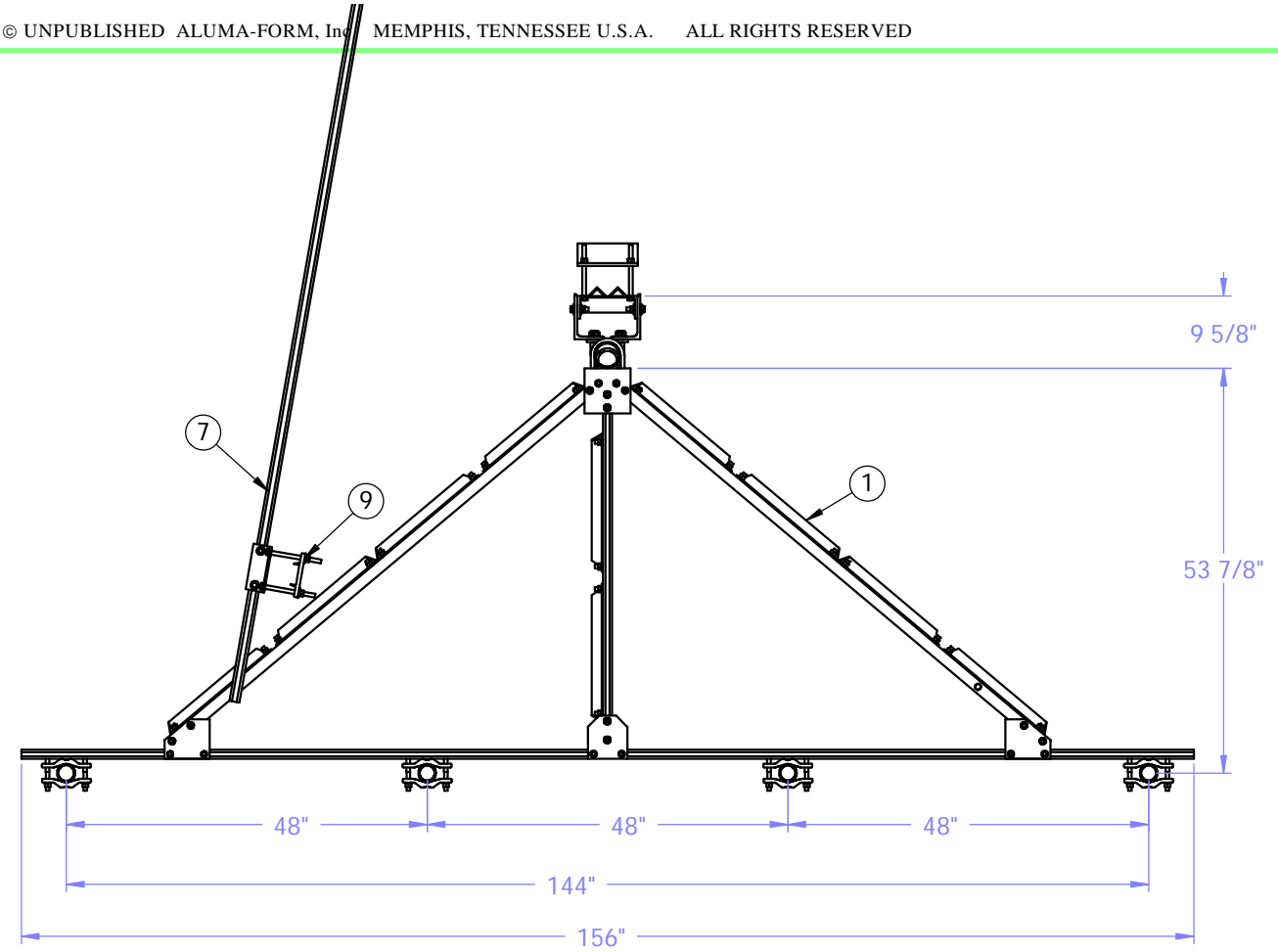
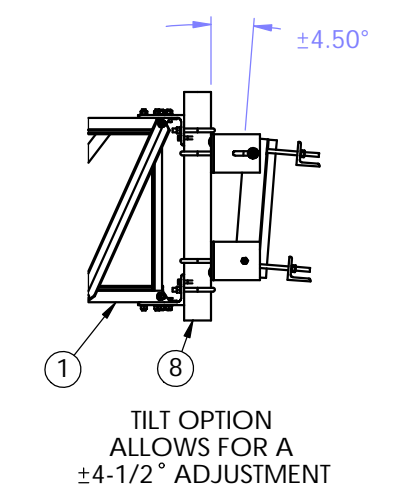
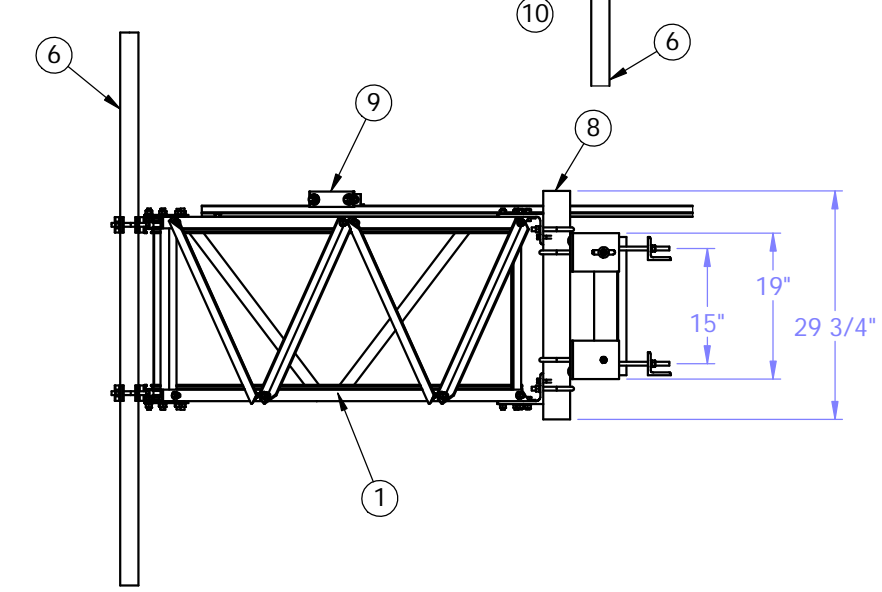
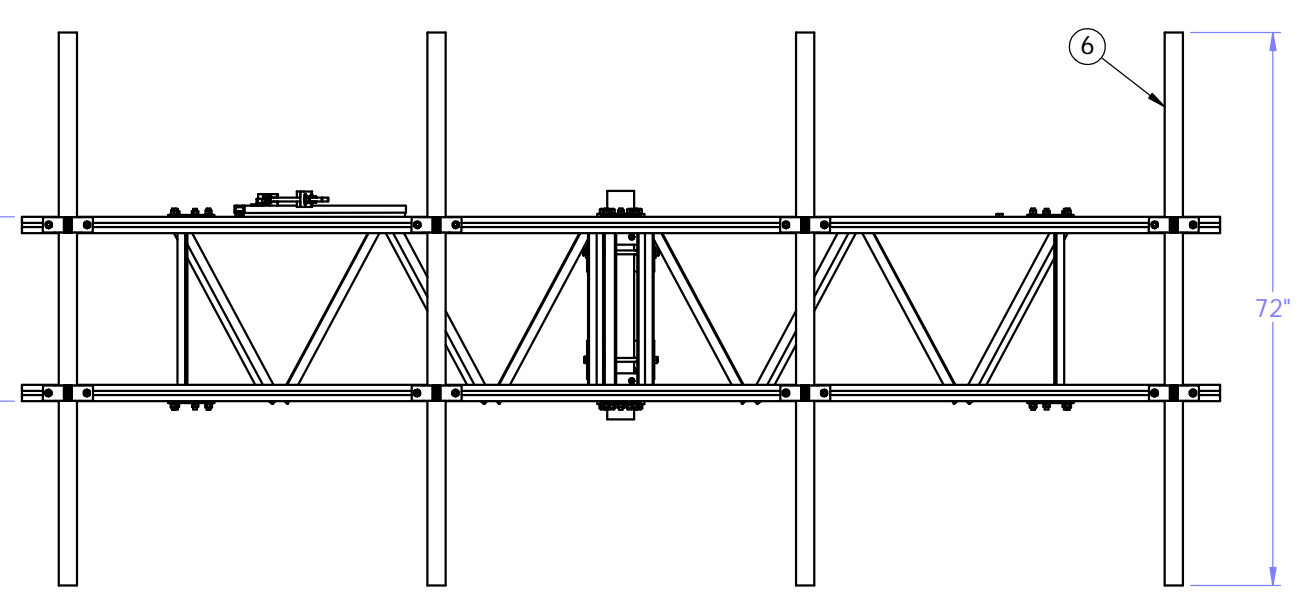


REPRODUCTION, DISTRIBUTION OR ALTERATION OF THIS DOCUMENT BY ANY MEANS, IN WHOLE OR IN PART, IS PROHIBITED. THIS DOCUMENT IS THE CONFIDENTIAL, PROPRIETARY AND INTELLECTUAL PROPERTY OF ALUMA-FORM, INC. ANY REPRODUCTION OR ALTERATION OF THIS DOCUMENT WITHOUT FIRST OBTAINING EXPLICIT WRITTEN AUTHORIZATION FROM ALUMA-FORM, INC. IS STRICTLY PROHIBITED.



ITEM	PART No.	QTY	DESCRIPTION
1	43522	1	COLLAPSED ASSEMBLY (CAM-2 SERIES)
2	14026	2	4WT-156
3	30019	18	BOLT, HEX, 1/2" X 1-1/4"
4	30039	18	1/2" MEDIUM HELICAL LOCKWASHER
5	30009	18	NUT, HEX, 1/2"
6	06031	4	PIPE, 2" SCHEDULE 40 X 72" LONG
7	14002	1	2WT, 1/2" X 5/8"
8	53564	1	ANTENNA MOUNT SUB-ASSEMBLY
9	42600	1	STABILIZER MOUNTING ASSEMBLY
10	53567	8	CAM-P/S-1-2



CHANGE / REVISION DESCRIPTION	E. A. NO.	CHANGE DATE	REVISION LEVEL	PART NUMBER

**ALUMA-FORM, Inc.**  
 3625 OLD GETWELL ROAD,  
 MEMPHIS, TN 38118-6072 U.S.A.  
 TEL (901) 362-0100

SCALE	DESCRIPTION	CAM-SSTSF-12-72	
1:25	MATERIAL	-	
PROJECT CODE	SECTION #	-	
WEIGHT	DRAWN BY	EEA	-
REVIEWED	RELEASE DATE	CARLISLE 13-JAN-03	-
APPROVED	RELEASE E. A.	-	-